

Configuring the Web Browser

A **web browser** is a software program designed to work with web pages. Your Blackboard course takes place online, within a web browser. Common web browsers include Microsoft Internet Explorer, Netscape, Firefox and others. Internet Explorer is the web browser installed on SIPI campus computers.

To utilize all of Blackboard's course tools and features, the web browser on your computer must be set up properly. This handout covers the main browser requirements for the Blackboard Learning System: tuning up your browser, enabling pop-up windows, and accepting the Java certificate.

❖ **NOTE:** Your browser may already be properly configured for Blackboard. However, if you cannot launch a survey or quiz, post to the discussion forum, or use the chat feature, use this handout as a guide for adjusting the browser settings.

❖ **NOTE:** Once you have configured your browser to work with Blackboard, *you should not have to perform these functions again* unless you switch to a different computer or browser.

Browser Check

Before logging in to Blackboard, click the **Check Browser** button.



After a few moments, Blackboard will return your **Browser Check Results**.

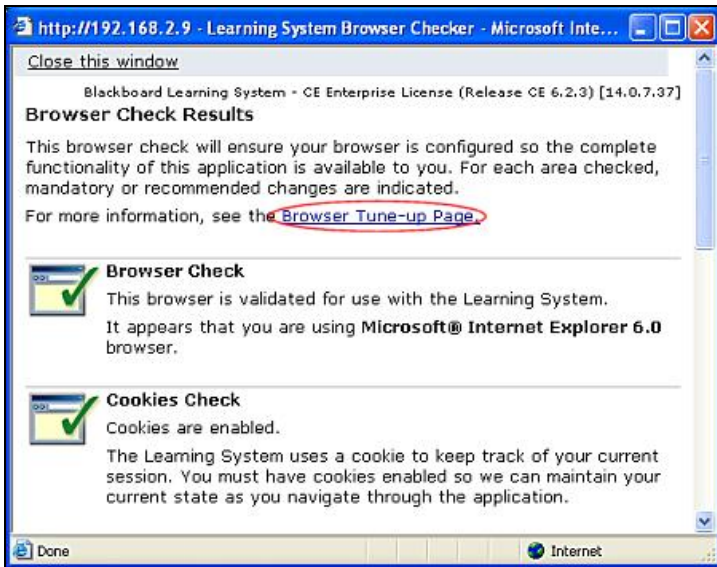
The results window will show a green checkmark beside the items that passed the check. A red X will appear beside the items that need to be corrected.

Scroll down the results window to review all the features that need to be enabled:

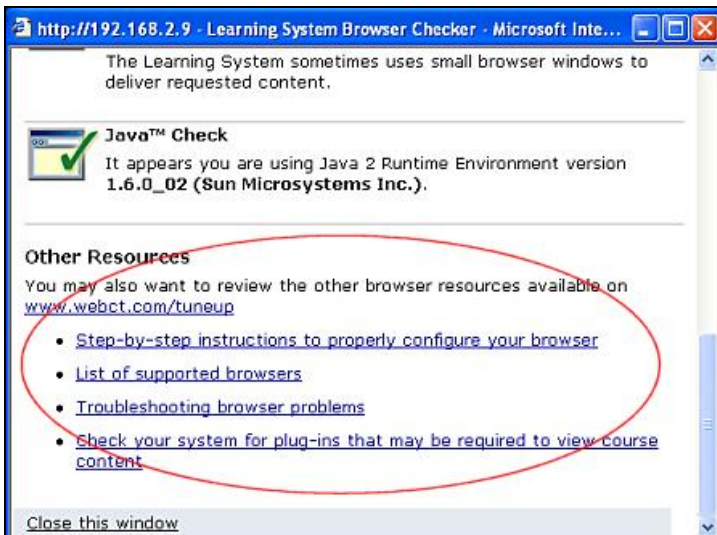
- Browser Check
- Cookies Check
- Javascript Check
- Pop-up Blocker Check
- Java Check

If necessary, click the link to the **Browser Tune-up Page** for more information on adjusting your browser settings. Click the link in the results window, or type this URL into your browser's address bar:

<http://www.webct.com/tuneup>



You can also consult the *Other Resources* at the bottom of the Browser Check Window (scroll down to see them).



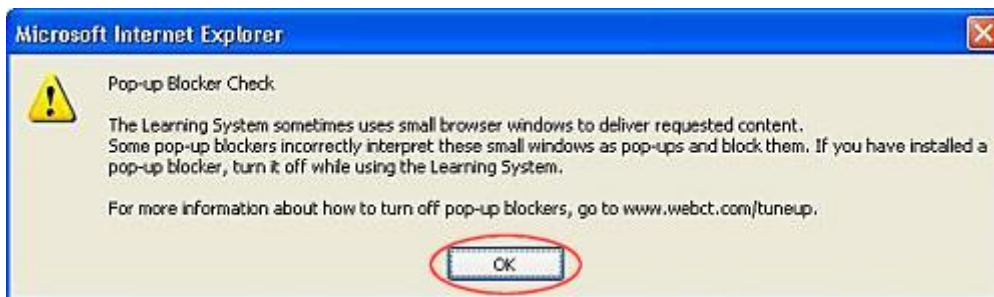
Pop-up Blockers

Pop-ups are small windows that often contain advertisements, so many computers and networks are set up to block them. However, Blackboard uses pop-up windows to display important features of the course, such as surveys, quizzes, and email messages. Your browsers pop-up blocker must be turned off when using Blackboard.

If the pop-up blocker is on, you'll receive a message when Blackboard tries to open a new, small window.



1. Click OK to acknowledge the message.



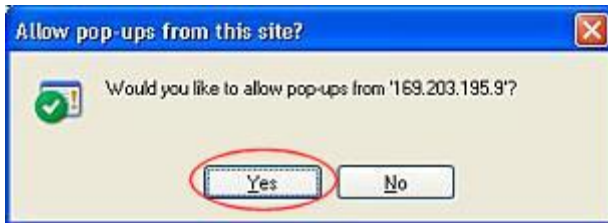
2. Click OK to continue to the next step in turning off the pop-up blocker.



3. Look closely in the web browser window, just below the Address bar, for the "Pop-up Blocked" message. Click to change the settings.



4. Click the second option, "Always Allow Pop-ups from This Site."



5. Click Yes.

Java Security Certificate

After logging in to the Blackboard Learning System, you will be prompted to accept a Java Security Certificate (digital signature). You must click *Yes* or *Always* to ensure that Java will work properly in your Blackboard course. The prompt window may look like this:



Or this:



Check the box next to “*Always...*” and then click ***Run***.